

## ***How to Flatfell a Seam***

Written exclusively for Authentic-Campaigner.com

By Dan Wambaugh of W.W. and Company

<http://www.wwandcompany.com/>

**Copyright 2007.**

All rights reserved.

Flatfelling is a simple process by which a seam is folded over and whip stitched into place. This reduces the fraying experienced in exposed seams, improves the aesthetic value of the garment, and strengthens the seam itself. Most unlined garments of the period that have exposed seams are flatfelled, and properly flatfelled seams are a very underrepresented item in the Civil War living history community.

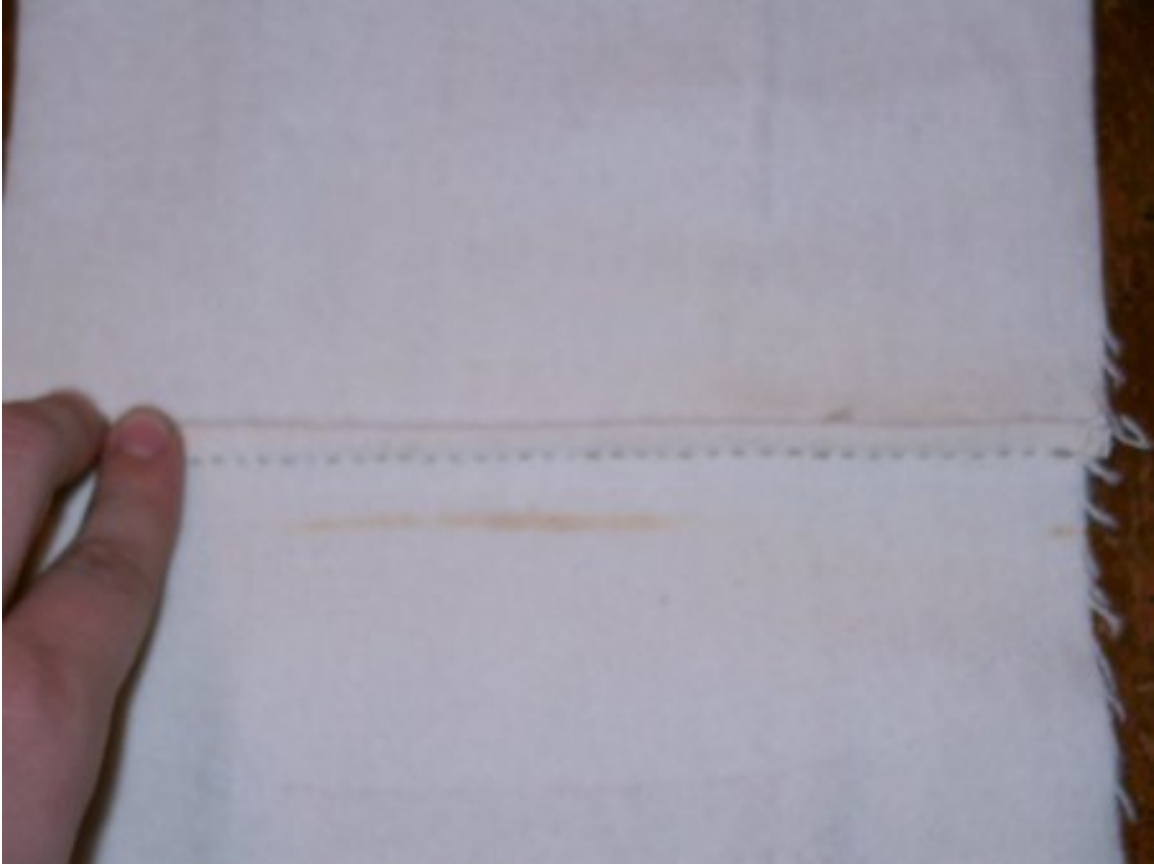
Step 1: Sew your seam with the prescribed seam allowance, (in this case we are sewing a ½" seam.)



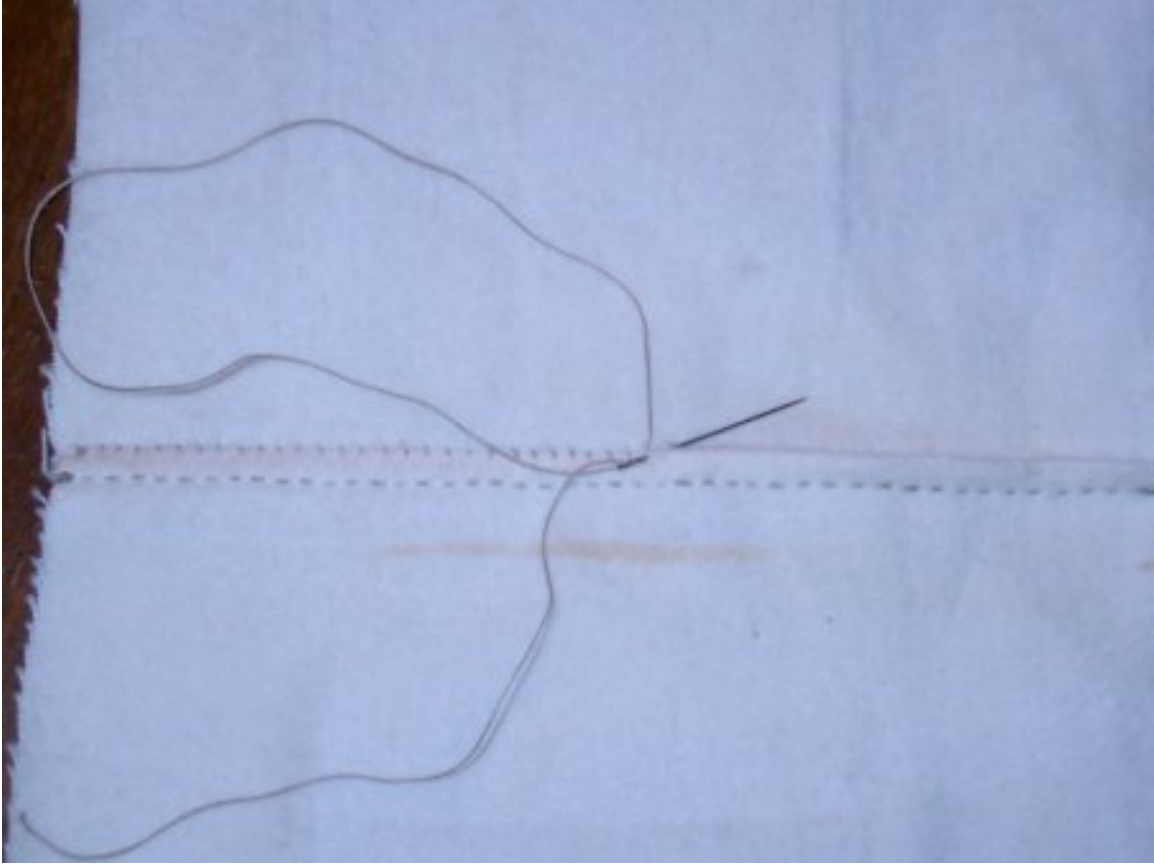
Step 2: Press open your seam, and trim one side of the seam allowance by half (in this case, we trim  $\frac{1}{4}$ " off of one of the seam allowances.)



Step 3: Double roll the other side of the seam allowance (fold it over once, press it, then fold it over onto the trimmed seam allowance and press it again.)



Step 4: Whip stitch the folded over seam allowance to the body of the piece catching only a few fibers in order that your stitching does not show up on the outside. Press the seam flat.



The final appearance of the finished flatfelled seam will expose the seam stitching on the inside, and on the outside you will see a number of small puckers where each whipstitch captured a few fibers of the body material.

