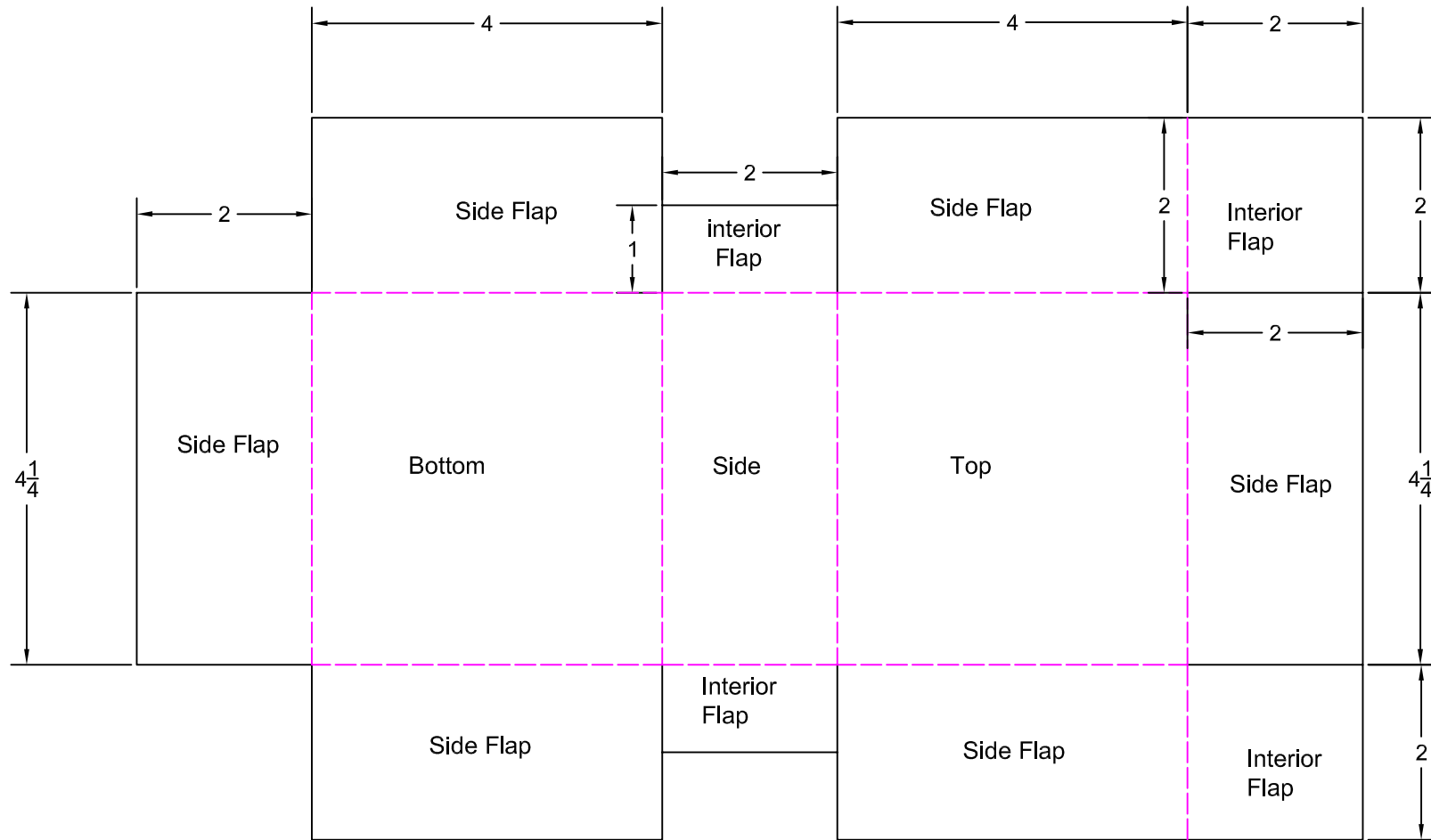


Spencer Outer Box



Note 1: All measurements are in Inches.

Note 2: All lines between flaps that are not fold lines need to be cut so flaps can fold independently.

This box is based on a copy made by John Cleaveland which he based on an original. This was the outside box which contained 7 smaller boxes. The small boxes contained 7 mettalic cartridges each. So this box contained 42 total rounds for the Spencer.